



Colseed Road

Mawsley, Kettering, NN14 1GT

£950 PCM

Lucas Lettings are delighted to present this well-presented two-bedroom end-of-terrace home, ideally situated in the ever-popular Mawsley Village. The accommodation comprises an entrance hall, cloakroom, kitchen, and a bright lounge featuring French doors opening onto the rear garden — recently upgraded to new white uPVC doors. Upstairs offers two well-proportioned bedrooms and a contemporary three-piece bathroom suite with electric shower. Externally, the property benefits from a generous enclosed garden with a useful storage shed, along with ample parking at the back. Available early March.

Council Tax Band - B

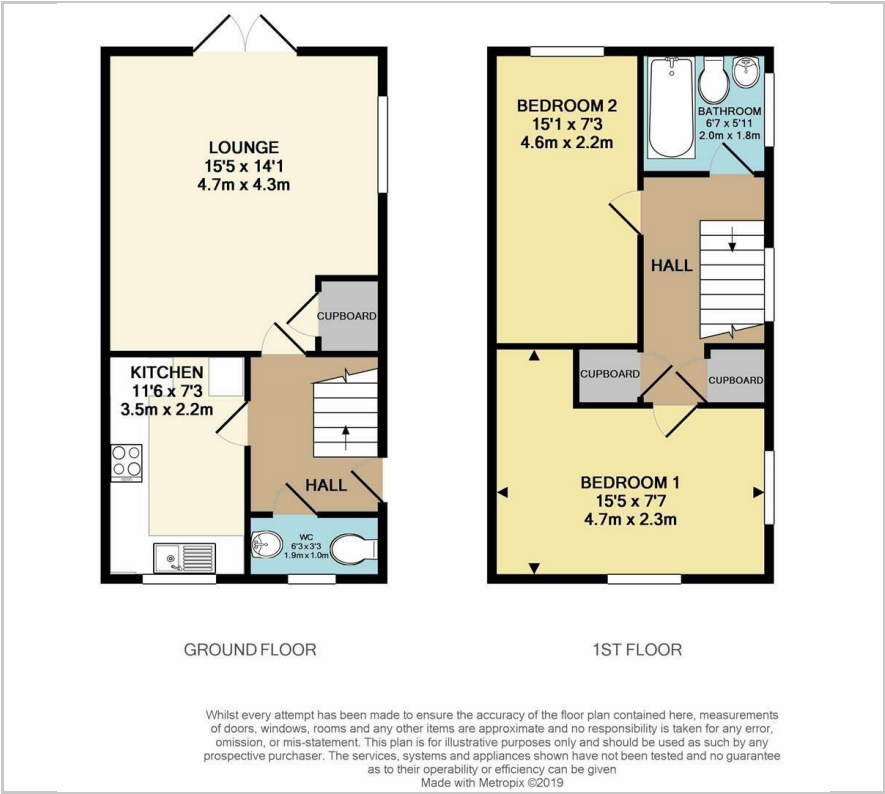
Holding Deposit Amount - £219.00

Viewing

Please contact our Lucas Lettings Office on 01536 313509 if you wish to arrange a viewing appointment for this property or require further information.



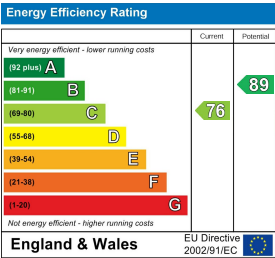
Floor Plan



Area Map



Energy Efficiency Graph



These particulars, whilst believed to be accurate are set out as a general outline only for guidance and do not constitute any part of an offer or contract. Intending purchasers should not rely on them as statements of representation of fact, but must satisfy themselves by inspection or otherwise as to their accuracy. No person in this firms employment has the authority to make or give any representation or warranty in respect of the property.